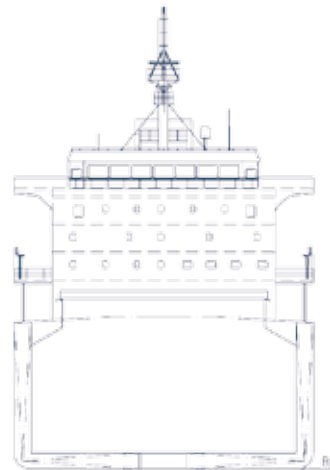




## M/V NINA-MARIE

- singledecker
- bulk carrier
- 34,880 mts



### MST Mineralien Schifffahrt Spedition und Transport GmbH

Am Ruttmann Kai 1  
92253 Schnaittenbach /Germany

Phone +49 (9622) 8 42 14  
+49 (9622) 8 45 16

management@minship.com  
chartering@minship.com  
operations@minship.com  
technic@minship.com  
accounting@minship.com





# M/V NINA-MARIE

singledecker  
bulk carrier



## MAIN PARTICULARS (all figures about)

<b>Built:</b>	08/2012	
<b>Class:</b>	GL +100A5 Bulk Carrier ESP, CSR, BC-A (holds 2,4 may be empty) GRAB (20), BWB, IW, + MC, AUT	
<b>Flag:</b>	Liberia	
<b>IMO no.:</b>	9611292	
<b>Length o.a.:</b>	179.97 m	
<b>Length b.p.:</b>	176.75 m	
<b>Breadth max.:</b>	30.00 m	
<b>Tonnage:</b>	GT 24,245	NT 11,510
<b>Deadweight:</b>	<b>Draft:</b>	
<b>summer</b>	34,880 mts	10.10 m/33.14 ft
<b>winter</b>	33,934 mts	9.89 m/32.45 ft
<b>Main engine:</b>	MAN B & W 5S50MC-C8 TII, SMCR 6,000 kW	
<b>Holds:</b>	5 holds	

Hold sizes	Hatch (m)	Tanktop (m)
<b>No. 1</b>	16.00 x 18.70/15.00	27.50 x 7.60/26.00
<b>No. 2</b>	19.20 x 20.30	26.30 x 26.50
<b>No. 3</b>	19.20 x 20.30	26.20 x 26.60
<b>No. 4</b>	19.20 x 20.30	26.20 x 26.60
<b>No. 5</b>	19.20 x 20.30	28.30 x 26.60/6.60

Hold capacities	cbft grain	cbm
<b>No. 1</b>	280,680	7,948.00
<b>No. 2</b>	345,730	9,790.00
<b>No. 3</b>	345,765	9,791.00
<b>No. 4</b>	345,765	9,791.00
<b>No. 5</b>	332,946	9,428.00
<b>Total</b>	<b>1,650,886</b>	<b>46,748.00</b>

<b>Hatch cover:</b>	TTS hydraulic operated folding type	
<b>TPI:</b>	129.00 laden	117.60 ballast
<b>TPC:</b>	50.80 laden	46.30 ballast
<b>Cargo gear:</b>	4 TTS electro hydraulic 30 t/swl cranes	
<b>Strength:</b>	Tanktop:	22.00 mts/sqm
	Hatchcover:	2.50 mts/sqm
	Deck:	4.00 mts/sqm
<b>Miscellaneous:</b>	Grain fitted, natural cargo hold ventilation, double-skin	

