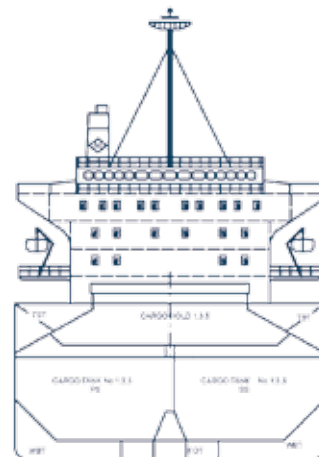




## M/V BARBARA

- bulk carrier
- fitted with cargo tanks
- 37,055 mts



### MST Mineralien Schifffahrt Spedition und Transport GmbH

Am Ruttmann Kai 1  
92253 Schnaittenbach /Germany

Phone +49 (9622) 8 42 14  
+49 (9622) 8 45 16

management@minship.com  
chartering@minship.com  
operations@minship.com  
technic@minship.com  
accounting@minship.com





# M/V BARBARA

bulk carrier  
fitted with cargo tanks



## MAIN PARTICULARS (all figures about)

<b>Built:</b>	04/1994	
<b>Class:</b>	NK, NS, ESP, MNS, MO	
<b>Flag:</b>	Liberia	
<b>IMO no.:</b>	9066760	
<b>Length o.a.:</b>	180.80 m	
<b>Length b.p.:</b>	172.33 m	
<b>Breadth max.:</b>	30.50 m	
<b>Tonnage:</b>	GT 22,147	NT 11,174
<b>Deadweight:</b>	<b>Draft:</b>	
<b>summer</b>	37,055 mts	10.93 m/35.86 ft
<b>winter</b>	35,986 mts	10.70 m/35.12 ft
<b>Main engine:</b>	Diesel United/Sulzer 6RTA 52 – 5,808 kw	
<b>Distance bow to manifold:</b>	pos.1 – 94.10 m, pos.2 – 21.20 m, pos.3 – 145.40 m	
<b>Holds:</b>	5 holds / 5 hatches	
<b>Tanks:</b>	6 cargo tanks to carry liquid cargoes	

Hold sizes	Hatch (m)	Tanktop (m)
<b>No. 1</b>	15.20 x 12.80	24.00 x 12.00/21.70
<b>No. 2</b>	19.20 x 15.20	25.40 x 22.60
<b>No. 3</b>	19.20 x 15.20	26.20 x 22.10
<b>No. 4</b>	11.20 x 15.20	15.70 x 22.60
<b>No. 5</b>	19.20 x 15.20	24.60 x 22.10

Tank capacities	cbm	
<b>No. 1 ps</b>	2,140.68	Tanks are epoxy-coated, pipes stainless steel
<b>No. 1 sb</b>	2,146.21	
<b>No. 3 ps</b>	2,953.00	
<b>No. 3 sb</b>	2,943.73	
<b>No. 5 ps</b>	2,477.93	
<b>No. 5 sb</b>	2,477.93	
<b>Total:</b>	<b>15,139.48</b>	

Hold capacities	cbft grain	cbm
<b>No. 1</b>	95,287	2,698.20
<b>No. 2</b>	346,345	9,807.30
<b>No. 3</b>	90,424	2,560.50
<b>No. 4</b>	204,767	5,798.30
<b>No. 5</b>	86,928	2,461.50
<b>Total:</b>	<b>823,751</b>	<b>23,325.80</b>

<b>Hatch cover:</b>	Nakata, MAC Corporation hydraulic operated folding type	
<b>TPI:</b>	114.70 laden	102.54 ballast
<b>TPC:</b>	47.20 laden	42.20 ballast
<b>Cargo gear:</b>	3 IHI electro hydraulic 25 t / swl cranes	
<b>Strength:</b>	Tanktop: holds 1 + 3 + 5:	10.00 mts/sqm
	holds 2 + 4:	12.61 mts/sqm
	Hatchcover:	2.50 mts/sqm
	Deck:	3.70 mts/sqm
<b>Miscellaneous:</b>	electric motor driven ventilation in cargo holds	

